

# Transforming the field of education: key challenges and key trends

Irina Efremova-Garth  
IBM CSR Leader for RCIS

# Addressing Global Skills Challenge

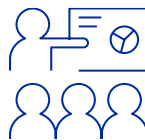
## Problem

AI/Digital Platforms will change all jobs within next decade, **375 million** employees will need to evolve, but not all are prepared



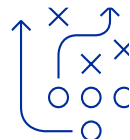
## Studies

Execs worried about new hires proficiency + tech and workplace talent shortage & low employee adaptability, but **50%** of execs are paralyzed



## Risk

Education sector lagging on innovation, socioeconomic disparities, unrest and instability



## Solution

Better classroom and career linkage + multimodal, lifelong learning + public / private partnerships

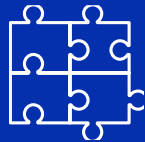


# Modern Learning Principles

Learner at the center



Open platform



Ongoing professional development for those who teach



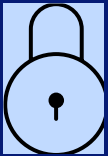
Fully accessible, always available digital content and experiences



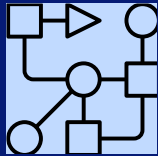
# Open P-TECH

[www.ptech.org/open-p-tech/](http://www.ptech.org/open-p-tech/)

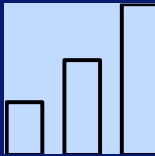
Exposes students to the emerging career fields and skills —both technical and professional — that can give them on-ramps to careers in STEM.



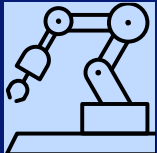
Cybersecurity



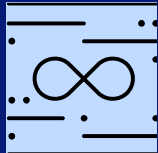
Blockchain



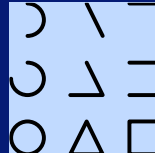
Data Science



Artificial  
Intelligence



Design  
Thinking



Professional  
Skills



#GoodTechIBM